



Looking through the years...



Panhandle Regional Planning Commission
1969-2019



**This year, 2019, marks the
Panhandle Regional Planning Commission's
50th year in operation.**

Hundreds of men and women have worked tirelessly as civil servants during the past five decades to ensure that the Panhandle is a wonderful place to live, raise families, and find meaningful work.

We are living our best lives today because of committed individuals from our past who were devoted into growing their communities and making the Panhandle a great, more robust region we proudly call the Panhandle.

This booklet includes some PRPC photos from the past, program highlights, and historical details and references that provide a short journey through the past five decades in the Panhandle.



1969 - 1981

The PRPC's first location was in the Amarillo Building on 3rd and Polk Streets.

Beginnings...



1981 - 1986

The PRPC outgrew its space in the Amarillo Building and moved to the Gilbralter Savings & Loan Building.



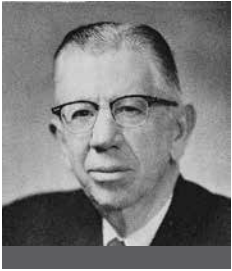
1993 - Present

The PRPC purchased the 8th Avenue building, in downtown Amarillo, which remains its headquarters today. The 25,000 sq. ft., four-level building was purchased for \$240,000.



1986 - 1993

In 1986 the PRPC moved again to the W. 10th Avenue building.



R.G. Mills
1969-1970



D. E. Hackley
1971



E. B. Nobles
1972



John Colquitt
1973



W. W. Nicklaus
1974



Warren C. Jenkins
1975



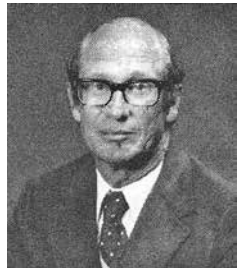
James McCray
1976



Sam Haynes
1977



Sam Morgan
1978



Harold Courson
1979

Board Chairmen



Warren C. Jenkins
1980-1981



Ralph Blodgett
1982



Austin C. Rose, Jr.
1983-1988



Les McNeill
1989



Therese Abraham
1990



Wayne Collins
1991



Jack D. Powell
1992



Burl Buchanan
1993



Tom Simons
1994



J. Pat Stephens
1995



Vernon Cook
1996



John Bowman
1997



Don Allred
1998



Robert Keys
1999



Ronnie Gordon
2000



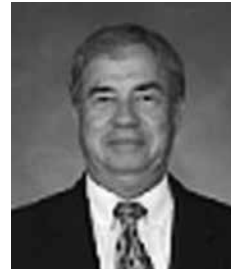
Judy Flanders
2001



Skip Huskey
2002



Boyd Vaughn
2003



Jack Hall
2004



David Hale
2005



Charlie Rivas, Jr.
2006



Juan Cantu
2007



Martha Rincon
2008



Jay Mayden
2009



Zelda Lang
2010



Wayne Nance
2011



Harold Keeter
2012



Brian Gillispie
2013



Tom Velasquez
2014



John James
2015



Paul Harpole
2016



Kerry Symons
2017



John Howard, M.D.
2018



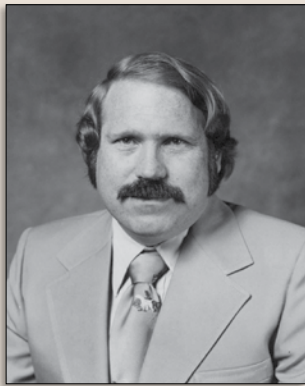
Ricky White
2019



Earnest R. Clark
1970-1975



Kyle G. Ingham
2017-present



George Loudder
1975-1981

Executive Directors



Jerry S. McGuire
1981-1985



Gary W. Pitner
1985-2017

1969-0
ARTICLES OF AGREEMENT

This agreement made and entered into by and between the City of Amarillo, the City of Canyon, the County of Potter and the County of Randall and all other governmental units which may hereafter adopt this agreement.

WITNESSETH:

The undersigned cities and counties acting in performance and discharge of their governmental functions and in consideration of the mutual advantages to be derived therefrom, hereby agree to establish and by these presents do establish a regional planning Commission under Article 1011m of the Revised Civil Statutes of Texas, as amended.

I.

The name of the Regional Planning Commission established by the Agreement shall be the Panhandle Regional Planning Commission.

II.

The organization, powers, duties, membership and functions of the association created hereby shall be as set forth in the by-laws attached hereto under the terms and conditions in those by-laws as stated or as they may be hereafter amended.

III.

This agreement and the by laws of the association shall be effective upon the date of its ratification by the ordinance, minute order, resolution or other appropriate signification of assent by the parties hereto as shown by a certified copy of said ordinance, minute order, resolution or signification of assent under the hand of the clerk or secretary of any original signatory party or a similar certified copy in the case of any governmental unit becoming a member of the association after the execution of this agreement by the parties originally signatories hereto.

WITNESS OUR HANDS, this the 23rd day of September, 1969.

ATTEST:

Ann Lyle Rigler
County Clerk

COUNTY OF POTTER

By E H Foster
County Judge

ATTEST:

Stephen D. Powell
City Secretary

CITY OF AMARILLO

By John S. [Signature]
City Manager

ATTEST:

LeRoy Hutton
County Clerk

COUNTY OF RANDALL

By Correll E. [Signature]
County Judge

ATTEST:

George J. [Signature]
City Clerk

CITY OF CANYON

By Paul E. [Signature]
Mayor



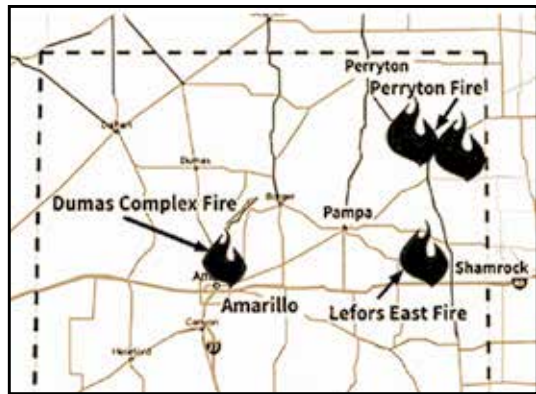
2010

More than 100 local elected officials from across the region were on hand at the Amarillo College Business & Industry Center in May of 2010 to attend the Panhandle Local Government Leadership Forum. The half-day session, hosted by the PRPC, was designed to provide insight regarding the issues and challenges facing local government in Texas.



1970/2006

The Texas Panhandle is part of an area known as Tornado Alley. In 1970 tornadoes struck Armstrong, Briscoe, Donley, Gray and Swisher counties, causing 17 deaths. In 2006 tornadoes hit the cities of Tulia and Cactus, causing significant damage.



2006

Wildfires in the spring of 2006 put the Regional Response Plan's Regional Resource Coordination center to its first real test. At least 436,000 acres burned in three large fires.



2009

Childress experienced a Macroburst, bringing 80-mile-per-hour winds, heavy rain, and large hail. An Office of Rural Community Affairs (ORCA) grant of \$350,000 helped pay for the cleanup effort.



2006 The Safe Room Rebate Program, an initiative to encourage residents to build tornado shelters, is still a viable program. To date, the PRPC awarded rebates on 3,192 shelters, received \$7,116,906.06 in FEMA funding to support the cost of those installs, and has another \$1.3M in funding requests pending for additional shelters.



2007 An Ogallala test hole drilling took place in the northeastern Panhandle. The Ogallala Aquifer is one of the world's largest fresh groundwater resources. It underlies 175,000 square miles (112 million acres) in eight states.



2014 Hereford's Truck Driving Academy at Everett and Mabel McDougal Hinkson Memorial Campus offers a simulation unit that provides operators a life-like training environment that mimics hazards and risk concerns. The PRPC developed and submitted a successful grant proposal to assist in funding this endeavor.



2005 Decontamination trailer/trucks, purchased with 2004 Texas Homeland Security monies, were delivered to Childress, Dalhart, Hereford and Pampa.



1997 A real 9-1-1 call was the inspiration for the creation of Andy the Ambulance, the remote control robot, used by the PRPC in its 9-1-1 education efforts to teach children when, where and how to call 9-1-1.

2012 Andy the Ambulance had an internal and external update, with a new viper blue color and a new L.E.D. light bar.



2005

Medicare began offering prescription benefits to beneficiaries through its Part D program.



1999

Bell Helicopter Textron plant was opened and Workforce Center staff fielded 15,000 inquiries from those interested in employment. More than 2,400 qualified applicants were referred to the company.



1996

Panhandle's Workforce Development Board was certified by Governor George Bush.



AAA's primary goal is to help seniors remain independent and in their own homes through a range of programs, including recreation, adult day care, and transportation.



Senior Citizen Centers have been built throughout the Panhandle to provide places for seniors to enjoy activities.



1999 C. E. Williams (left), Jim Derrington, and John C. Williams, were among the first to work together addressing future water planning issues.



1976 Board of Directors



1993 Board of Directors



2005 Board of Directors



2006 Chamber members and the PRPC staff celebrated the name change to Panhandle WorkSource.



1981 Ola Kidd (right) served as the first staff Ombudsman and Weldon Scarbrough (left) took the lead position in 1988 after working several years as a program volunteer.



1989 The Dispute Resolution Center, created by the PRPC in 1989, is one of only two regional COGs to host a dispute resolution initiative.



1986 PRPC Board Chair Austin Rose (left) presented the first Regional Service Award to Warren Jenkins.



2010 The Panhandle was fortunate to have individuals from our region serving in key leadership positions with two statewide local government organizations. Vernon Cook (left), former Roberts County Judge, served as President of the Texas Association of Counties and Debra McCartt, former Mayor of the City of Amarillo, served as President of the Texas Municipal League.



1992 Perrton City Manager David Landis received the first Beelee Goodwin Regional Public Administrator Award from Gary Pitner, retired PRPC Executive Director.



1995 / 2017 Both former PRPC Board Chairmen City of Dimmitt Mayor Wayne Collins and Childress County Judge Jay Mayden served on the Texas Association of Regional Council's (TARC) Board of Directors. Each went on to serve as TARC President: Collins in 1995 and Mayden in 2017.



2007 Pat Sims, former City Secretary, City of Happy, (left) received the Beelee Goodwin Public Administrator Award and Robert Keys, former Amarillo City Commissioner, received the Regional Service Award.



2004

U.S. Senator John Cornyn (left) shakes hands with Donley County Judge Jack Hall before delivering the keynote address at the 2004 PRPC Annual Meeting.



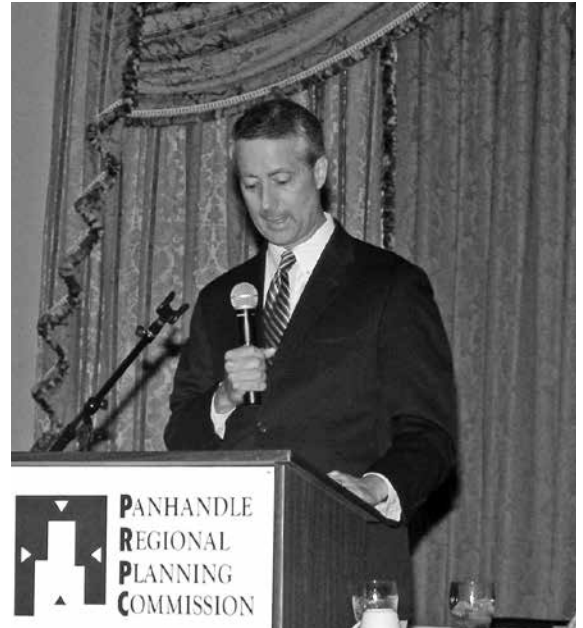
1986

The late Texas Governor Mark White served as the keynote speaker for the 1986 PRPC Annual Meeting.



2017

Senator Kel Seliger served as the keynote speaker for the 2017 PRPC Annual Meeting, where he received the Regional Service Award.



2009

U.S. Representative Mac Thornberry, representing the Texas Panhandle, spoke at the PRPC Annual Meeting.



2011

The PRPC Bylaws were amended to offer a seat on the Board to a Texas Legislator who represents a district located within the boundaries of the PRPC's service region. Representative Four Price, District 87, has been serving in that capacity since January 2012. Representative Price delivered the keynote address at the 2013 PRPC Annual Meeting and was the recipient of the 2018 Regional Service Award.



2019

Mobile app supporting public transit was a project of PROMPT.



2016

The PRPC hosted its 6th annual E-Waste collection event, collecting more than 20 tons of no-longer-used electronic products for safe recycling.



2012

The PRPC launched its Resolve to be Ready program that enabled residents to opt-in to receive emergency alerts on their cell phones, by text, email, or on their home phones.
www.R2BeReady.com



2003

Finance Directors like Don Jennings, City of Perryton, worked with the PRPC to develop the Texas Revenue Recovery Association to collect delinquent utility monies.



2006

Panhandle Workforce Development Board (PWDB) members and PRPC staff display a \$100,000 WIA Exemplary Award check given by the Texas Workforce Commission, one of the many incentive awards the PWDB has received.



2000

The PRPC provided project management services for the \$600,000 project to restore the 3,255-foot Canadian River Wagon Bridge in Hemphill County.



1982 Former Board Chairmen.



2019 Former Board Chairmen.



1976 PRPC Staff photo



2003 PRPC Staff photo



1985 PRPC Staff signatures



1996 PRPC Staff photo



2007 PRPC Staff photo



2011 PRPC Staff photo



1985 Through the CDBG program, the first elevated water storage tank was built in the City of Vega in Oldham County. Fifteen years later, the City replaced the tank.



2000 Spearman received a new water tower.



2001 The City of Channing received its new water tower.



2010 The City of Perryton was one of the municipalities to receive CDBG funding, enabling the construction of a new water tower.

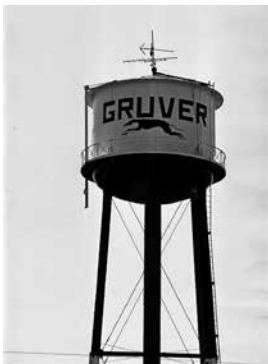
**Since 1985
over \$13.8 million
in funding**

29 Built, painted or refurbished elevated storage tanks and stand pipes
\$6,959,243

32 Worked on ground water storage tanks
\$6,897,233



2009 The community of Washburn in Armstrong County received its new standpipe water tank.



1990 The City of Gruver received its new water tower.



1990 The City of Stinnett received its new water tower.



2012 The City of Bovina wrapped up a CDBG project to rehab water wells and install water meters throughout the city, as well as provide a generator to pump.



1991

Under the Regional Services program, PRPC sponsored 40 workshops including Word Perfect training.



2009

After the Celanese plant closed, employees took Office Technology courses through the Workforce Investment Act Dislocated Worker program.



2006

The Rural Micro Loan program, which began in 2001, made a loan to Panther Pizza in Panhandle, Texas.



1971 - 2019

AAA's Nutrition Services programs are an important strategy for reducing food insecurity among the elderly.

Over the last five decades the AAA, in collaboration with a variety of partners, has provided more than **7.4 MILLION CONGREGATE AND HOME-DELIVERED MEALS** for Panhandle senior citizens.



1970

A proposed contract between PRPC and Amarillo College established the PRLEA. A total of 2,764 men and women have graduated from the Academy.



2007

Tires are often illegally disposed of along roadways. More than \$61,000 was awarded to the Cities of Borger and Dimmitt for surveillance equipment to monitor such dumping.



2000

Lake Tanglewood

2001

Village of Timbercreek

Since 2000/2001 the PRPC has provided interim or part-time management services to communities that cannot afford full-time administrative personnel.



1979

“The knowledge and assistance that the PRPC is able to provide small communities in applying for and administering a variety of grants is invaluable. The Panhandle region benefits from the staff’s expertise.”

Harold Courson

Former PRPC Board Chair, 1979



1993

Former Parmer County Judge Bonnie Clayton displays a new street sign in Parmer County as part of the Panhandle’s Rural Addressing Project begun in 1993.



2016

There are 32 local Economic Development Corporations in the region helping improve the area’s economy. Kyle Ingham and Bob McCain, Mayor of Wheeler, discuss the city’s strategic plan.



2000

Work was completed on the \$14 million restoration of Potter County’s Santa Fe Building in downtown Amarillo.



“Look deep into nature, and then you will understand everything better.”

Albert Einstein

Photos of the front cover as well as the Canadian River Wagon Bridge and the Palo Duro Canyon were taken by Billy Bob Brown, owner of Brown Farms, Panhandle, Texas.



Panhandle Regional Planning Commission

415 South West 8th Avenue, PO Box 9257 • Amarillo, Texas 79105
806.372.3381 • www.theprpc.org